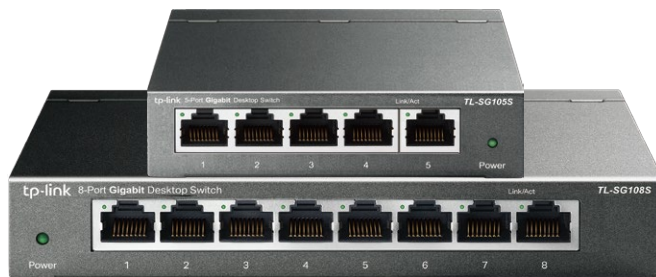


10/100/1000Mbps Desktop Switch Datasheet

MODELS: TL-SG105S/TL-SG108S



Highlights

- 10/100/1000Mbps Auto-Negotiation RJ45 ports supporting Auto-MDI/MDIX
- Green Ethernet technology saves power
- IEEE 802.3x flow control provides reliable data transfer
- Steel housing, desktop or wall-mounting design
- Support 802.1p/DSCP QoS and IGMP Snooping function
- Plug and play, no configuration needed

Overview

The TP-Link Gigabit Unmanaged Switch TL-SG105S/TL-SG108S provide an easy way to expand your wired network. With all ports support Auto-MDI/MDIX, there's no need to worry about the type of cable to use. Featuring full duplex mode, TL-SG105S/TL-SG108S can process data at a rate up to 2000Mbps, making it an ideal choice for expanding your high performance wired network. Moreover, with innovative energy-efficient technology, TL-SG105S/TL-SG108S can save power consumption, making it an eco-friendly solution for your home or office network.

Gigabit Switch

Featured 10/100/1000Mbps ports, TL-SG105S/TL-SG108S greatly expands your network capacity, enabling instant large files transferring. So, power users in the home, office, workgroup, or creative production environment can now move large, bandwidth-intensive files faster. Transfer graphics, CGI, CAD, or multimedia files across the network instantly.

Power down Idle Ports

When a computer or network equipment is off, the corresponding port of a traditional switch will continue to consume considerable amounts of power. TL-SG105S/TL-SG108S can automatically detect the link status of each port and reduce the power consumption of ports that are idle, resulting in up to reduction in power use.

Power Budget According to Cable Length



Ideally, shorter cable would use less power because of less power degradation over their length. This is not the case with most devices as they will use the same amount of power across the cable regardless of the length.

Easy to Use

The auto features of this gigabit switch make installation plug and play and hassle-free. No configuring is required. Auto MDI/MDIX eliminate the need for crossover cables. Auto-negotiation on each port senses the link speed of a network device (either 10, 100, or 1000 Mbps) and intelligently adjusts for compatibility and optimal performance.

Specifications

Features & Performance

Product Picture		
Model	TL-SG105S	TL-SG108S
Standards	IEEE 802.3i, IEEE 802.3u, IEEE 802.3ab, IEEE 802.3x, IEEE 802.1p	
Forwarding Mode	Store and forward	
Interface	5 10/100/1000Mbps RJ45 ports Auto Negotiation Auto MDI/MDIX	8 10/100/1000Mbps RJ45 ports Auto Negotiation Auto MDI/MDIX
Switching Capacity	10Gbps	16Gbps
MAC Address Table	2K	4K
Packet Forwarding Rate	7.4Mpps	11.9Mpps
Buffer Memory	1Mb	1.5Mb
Jumbo Frame	16KB	16KB
Advanced Features	Green Technology 802.3x Flow Control 802.1p/DSCP QoS IGMP Snooping	
Max Power Consumption (220V/50Hz)	2.3W	3.31W
LEDs	Power, Link/Act (indicators per port built into RJ45 port)	
Power Supply	External Adapter (output: 5VDC/0.6A)	External Adapter (output: 9VDC/0.6A)
Dimensions (W × D × H)	3.9 x 3.9 x 1.0 in. (99.8 x 98 x 25 mm)	6.2 x 4.0 x 1.0 in. (158 x 101 x 25 mm)
Certifications	CE, FCC, RoHS	
Environment	Operating Temperature: 0°C~40°C (32°F~104°F) Storage Temperature: -40°C~70°C (-40°F~158°F) Operating Humidity: 10% ~ 90%RH, non-condensing Storage Humidity: 5%~95%RH, non-condensing	

Ordering Information

Product Model	Description
TL-SG105S	5-Port 10/100/1000Mbps Desktop Switch
TL-SG108S	8-Port 10/100/1000Mbps Desktop Switch

www.tp-link.com

Specifications are subject to change without notice. TP-Link is a registered trademark of TP-Link Technologies Co., Ltd. Other brands and product names are trademarks or registered trademarks of their respective holders. Copyright © 2018 TP-Link Technologies Co., Ltd. All rights reserved.