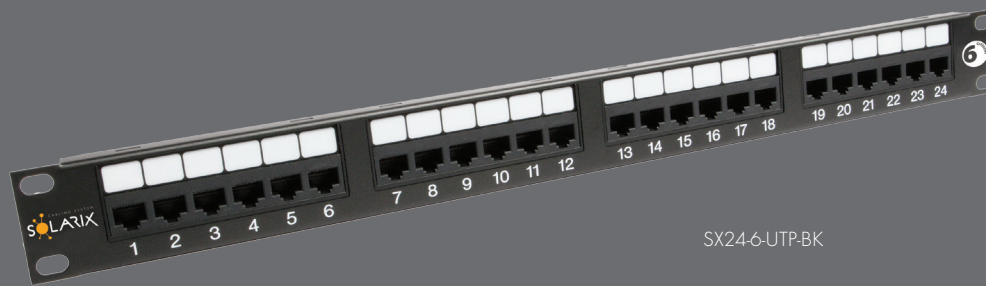


Unshielded Patch Panels CAT6



SX24-6-UTP-BK

2.5/5
Gbps

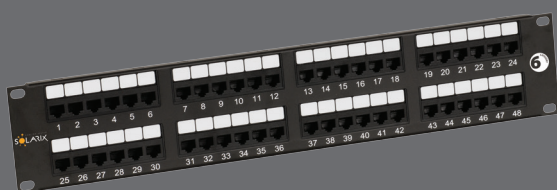
350
MHz

Solarix Category 6 unshielded patch panels are designed to exceed the ANSI/TIA 568C.2, ISO/IEC 11801, and EN 50173 performance specifications providing usable bandwidth up to 350 MHz. These high-density panels are available in 24- through 48-port versions and feature enhanced front and rear labeling for easy circuit identification. Solarix Category 6 unshielded panels support both T568A and T568B wiring configurations using an easy to read colour-coded wiring labels. These panels are constructed for maximum durability and feature a fully enclosed, 6-port module design, which provides flexibility and protection of printed circuitry during termination. A newly designed RJ45 contact configuration provides enhanced plug to jack connection integrity for superior reliability. Rear termination is made quick and easy using a 4-pair dual 110/Krone type connector compatible with industry standard 110 or Krone termination tools. These Solarix panels are supplied in black colour.

Technical parameters

Supported protocols	2.5/5GBASE-T and lower	Colour	Black
Number of Ports	24 and 48x RJ45	Units	1U (24 ports) and 2U (48 ports)
Life Cycle	1000 plug insertions	Height	44 mm (24 ports), 88 mm (48 ports)
Contact Material	50 µin gold	Width	484 mm
IDC Block	Dual 110/Krone 8p8c	Storage Temperature	-40 to +70 °C
IDC Block Life Cycle	200 terminations	Operation Temperature	-10 to +60 °C
Conductor Size and Type	AWG 26 – 22, solid	Max. Humidity Operation	93%
Other Material	FR according to UL94-0		

Product number	Type number	Description
24200024	SX24-6-UTP-BK	19" Patch Panel Solarix 24x RJ45 CAT6 UTP 350 MHz Black 1U
24200048	SX48-6-UTP-BK	19" Patch Panel Solarix 48x RJ45 CAT6 UTP 350 MHz Black 2U



SX48-6-UTP-BK



SX24-6-UTP-BK

