

COPYRIGHT © Hangzhou EZVIZ Software Co., Ltd. ALL RIGHTS RESERVED.

Any and all information, including, among others, wordings, pictures, graphs are the properties of Hangzhou EZVIZ Software Co., Ltd. (hereinafter referred to as "EZVIZ"). This user manual (hereinafter referred to as "the Manual") cannot be reproduced, changed, translated, or distributed, partially or wholly, by any means, without the prior written permission of EZVIZ. Unless otherwise stipulated, EZVIZ does not make any warranties, guarantees or representations, express or implied, regarding to the Manual.


About this Manual

The Manual includes instructions for using and managing the product. Pictures, charts, images and all other information hereinafter are for description and explanation only. The information contained in the Manual is subject to change, without notice, due to firmware updates or other reasons. Please find the latest version in the EZVIZ™ website (<http://www.ezviz.com>).

Revision Record

New release – January, 2022

Trademarks Acknowledgement

EZVIZ™, ™, and other EZVIZ's trademarks and logos are the properties of EZVIZ in various jurisdictions. Other trademarks and logos mentioned below are the properties of their respective owners.

Legal Disclaimer

TO THE MAXIMUM EXTENT PERMITTED BY APPLICABLE LAW, THE PRODUCT DESCRIBED, WITH ITS HARDWARE, SOFTWARE AND FIRMWARE, IS PROVIDED "AS IS", WITH ALL FAULTS AND ERRORS, AND EZVIZ MAKES NO WARRANTIES, EXPRESS OR IMPLIED, INCLUDING WITHOUT LIMITATION, MERCHANTABILITY, SATISFACTORY QUALITY, FITNESS FOR A PARTICULAR PURPOSE, AND NON-INFRINGEMENT OF THIRD PARTY. IN NO EVENT WILL EZVIZ, ITS DIRECTORS, OFFICERS, EMPLOYEES, OR AGENTS BE LIABLE TO YOU FOR ANY SPECIAL, CONSEQUENTIAL, INCIDENTAL, OR INDIRECT DAMAGES, INCLUDING, AMONG OTHERS, DAMAGES FOR LOSS OF BUSINESS PROFITS, BUSINESS INTERRUPTION, OR LOSS OF DATA OR DOCUMENTATION, IN CONNECTION WITH THE USE OF THIS PRODUCT, EVEN IF EZVIZ HAS BEEN ADVISED OF THE POSSIBILITY OF SUCH DAMAGES.

TO THE MAXIMUM EXTENT PERMITTED BY APPLICABLE LAW, IN NO EVENT SHALL EZVIZ'S TOTAL LIABILITY FOR ALL DAMAGES EXCEED THE ORIGINAL PURCHASE PRICE OF THE PRODUCT.

EZVIZ DOES NOT UNDERTAKE ANY LIABILITY FOR PERSONAL INJURY OR PROPERTY DAMAGE AS THE RESULT OF PRODUCT INTERRUPTION OR SERVICE TERMINATION CAUSED BY: A) IMPROPER INSTALLATION OR USAGE OTHER THAN AS REQUESTED; B) THE PROTECTION OF NATIONAL OR PUBLIC INTERESTS; C) FORCE MAJEURE; D) YOURSELF OR THE THIRD PARTY, INCLUDING WITHOUT LIMITATION, USING ANY THIRD PARTY'S PRODUCTS, SOFTWARE, APPLICATIONS, AND AMONG OTHERS.

REGARDING TO THE PRODUCT WITH INTERNET ACCESS, THE USE OF PRODUCT SHALL BE WHOLLY AT YOUR OWN RISKS. EZVIZ SHALL NOT TAKE ANY RESPONSIBILITIES FOR ABNORMAL OPERATION, PRIVACY LEAKAGE OR OTHER DAMAGES RESULTING FROM CYBER ATTACK, HACKER ATTACK, VIRUS INSPECTION, OR OTHER INTERNET SECURITY RISKS; HOWEVER, EZVIZ WILL PROVIDE TIMELY TECHNICAL SUPPORT IF REQUIRED. SURVEILLANCE LAWS AND DATA PROTECTION LAWS VARY BY JURISDICTION. PLEASE CHECK ALL RELEVANT LAWS IN YOUR JURISDICTION BEFORE USING THIS PRODUCT IN ORDER TO ENSURE THAT YOUR USE CONFORMS TO THE APPLICABLE LAW. EZVIZ SHALL NOT BE LIABLE IN THE EVENT THAT THIS PRODUCT IS USED WITH ILLEGITIMATE PURPOSES.

IN THE EVENT OF ANY CONFLICTS BETWEEN THE ABOVE AND THE APPLICABLE LAW, THE LATTER PREVAILS.

Table of Contents

Overview	1
1. Package Contents	1
2. Basics	1
Setup.....	2
1. Get the EZVIZ App	2
2. Power on Water Sensor	2
3. Add Water Sensor	3
Installation	5
BATTERY INSTALLATION and REPLACEMENT ..	6
1. Install Battery	6
2. Replace Battery	6
3. Removable Lithium ion Battery(CR2032)	6
Operations on the EZVIZ App	7
1. Homepage.....	7
2. Settings.....	7
INFORMATION FOR PRIVATE HOUSEHOLDS	8

Overview

1. Package Contents



Water Sensor (x1)



Regulatory Information (x1)



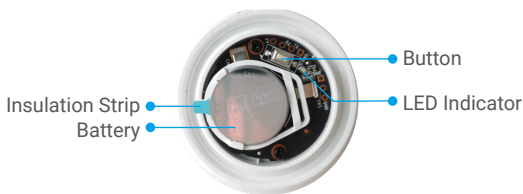
Quick Start Guide (x1)

2. Basics

After the water sensor is placed on the designated area, the water sensor will be triggered when the water level reaches above 0.5 mm. At the same time, the linked EZVIZ gateway will send a sound-light alarm and the EZVIZ APP will also receive the alarm notification. You can check the waterlogging status of the device on EZVIZ APP.



Back View



Interior Diagram

Name	Description
Button	Press and hold the Button for 5s, the water sensor will restart and then enter device adding mode.
LED Indicator	<ul style="list-style-type: none">• Fast-flashing Blue: Enters device adding mode.• Fast-flashing Blue and then off: Added to the Gateway successfully or failed.• Fast-flashing Blue and then off after 180 seconds: No response for adding device, the system exits automatically.• Blue for 1s and then off: Device starts or press the Button for 1 time.

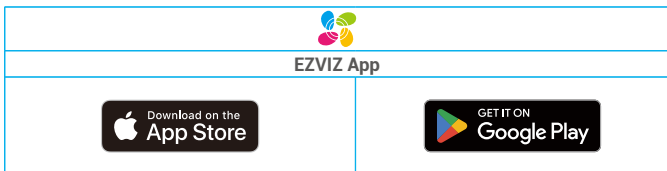
Setup

Follow the steps to set your detector.

1. Get the EZVIZ app, and log in to your EZVIZ app account.
2. Power on your water sensor.
3. Add your water sensor to your EZVIZ account.

1. Get the EZVIZ App

1. Connect your mobile phone to Wi-Fi (suggested).
2. Download and install the EZVIZ app by searching for "EZVIZ" in the App Store or Google PlayTM.
3. Launch the app and register an EZVIZ user account.

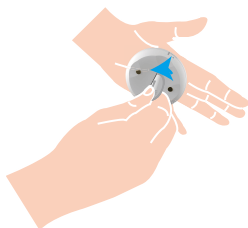


- i** If you have already used the app, please make sure that it is the latest version. To find out if an update is available, go to the app store and search for "EZVIZ".

2. Power on Water Sensor

Step 1 Remove Rear Cover

Remove the rear cover of the water sensor by rotating it anticlockwise with sheet tools (like coin with less than 2mm thickness) as shown in the figure below.



- i** • It is recommended to press the sheet tool into the groove and then rotate it, or you can put the water sensor in your hands to press and twist it by your palm.

Step 2 Remove Insulation Strip

Remove the battery insulation strip as shown in the figure below.



- i** • If you need to replace the battery, please purchase one CR2032 210mAh.
• When replacing batteries, please insert with the positive side facing up.
• Keep your hands dry and clean when touching the circuit board.

3. Add Water Sensor

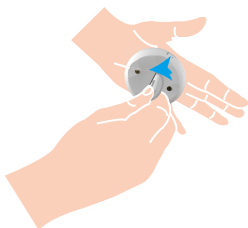
- i** The water sensor should be used along with EZVIZ Zigbee Smart Gateway (afterinafter referred to as "gateway"). Please add gateway to the EZVIZ Cloud by referring to the gateway user manual, and then add the water sensor to the gateway.

Method One: Add by Scanning QR Code

1. Log in to your account through EZVIZ app, tap the device adding icon and then the QR code scanning interface will be displayed.



2. Remove the rear cover of the water sensor by rotating it anticlockwise with sheet tools (like coin with less than 2mm thickness) as shown in the figure below. It is recommended to press the sheet tool into the groove and then rotate it, or you can put the water sensor in your hands to press and twist it by your palm.

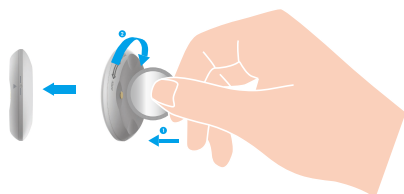


3. Scan the QR code on the inner side of the cover or on the user manual, and then add the water sensor to the gateway.



4. Add the water sensor to the gateway by following the wizard on the app.
5. Rotate tightly the rear cover of the water sensor clockwise till the aligning mark ► on rear cover is aligned with the mark | on the front cover.

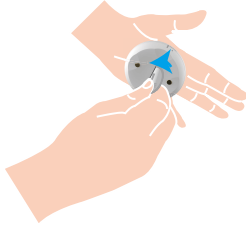
- i** When rotate the rear cover of the water sensor, press the coin into the groove and then rotate it.



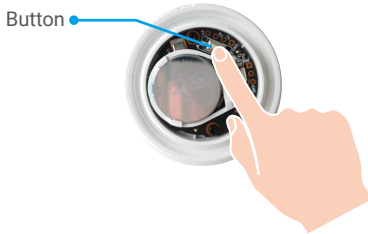
Method Two: Add by the Gateway

i When adding water sensor by the gateway, place the water sensor as close to the gateway as possible.

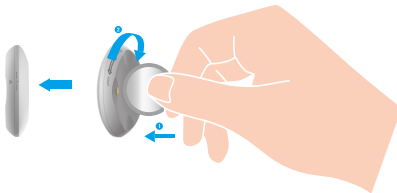
1. Make the gateway enter device adding mode as instructed by the user manual of the gateway.
2. Remove the rear cover of the water sensor by rotating it anticlockwise with sheet tools (like coin with less than 2mm thickness) as shown in the figure below. It is recommended to press the sheet tool into the groove and then rotate it, or you can put the water sensor in your hands to press and twist it by your palm.



3. Press and hold the water sensor Button for 5 seconds, and then the water sensor enters device adding mode.



4. When the water sensor indicator flashes blue quickly and then off, the water sensor has been added to the gateway successfully.
5. After the water sensor is added successfully, Rotate the sensor rear cover clockwise to tighten the rear cover till the aligning mark ► on rear cover is aligned with the mark ◊ on the front cover.



Installation

The water sensor can be put on the any plane surfaces of restroom, veranda, kitchen, warehouse and etc..

- Please install the water sensor on areas prone to water leakage.
- Do not install the water sensor on places where water has already flooded.
- Do not install the water sensor on places with people comes and goes to avoid losing.
- Do not install the water sensor in an environment with corrosivity or intense magnetic fields.
- To avoid accidental ingestions or other risks, keep the water sensor away from babies and children when in use.
- It is recommended that the distance between the water sensor and gateway be less than 20m. If there are walls between them, the number of walls should be no more than 2.
- If you have a house with large area, please purchase two or more EZVIZ devices for a better use effect.





BATTERY INSTALLATION and REPLACEMENT

1. Install Battery

Tear off the battery insulation, put the battery into the baseplate and insert it to the end.

2. Replace Battery

Remove the battery from baseplate and replace battery with the Lithium Battery CR2032 purchased by a regular manufacturer. Test the device for correct operation whenever the batteries are replaced after re-fitting the device onto the base plate. If the device is not working properly, please add the device and configure the network again by following the steps in Setup part or directly contact our technical support.

-  Risk of explosion if the battery is replaced by an incorrect type.
- Improper replacement of the battery with an incorrect type may defeat a safeguard (for example, in the case of some lithium battery types).
- Do not dispose of the battery into fire or a hot oven, or mechanically crush or cut the battery, which may result in an explosion.
- Do not leave the battery in an extremely high temperature surrounding environment or extremely low air pressure, which may result in an explosion or the leakage of flammable liquid or gas.
- Dispose of used batteries according to the instructions.
-  identifies the battery holder itself and identifies the positioning of the cell(s) inside the battery holder.
- "+" identifies the positive terminal(s) of device which is used with, or generates direct current, "-" identifies the negative terminal(s) of device which is used with, or generates direct current.

3. Removable Lithium ion Battery(CR2032)

Chemical Name	CAS No.	% wt.
Manganese dioxide	1313-13-9	30
Graphite	7782-42-5	1.2
Carbon black	1333-86-4	1.2
Polytetrafluoroethylene	9002-84-0	1.0
Lithium	7439-93-2	2.6
Propylene Carbonate-solvent	108-32-7	2.3
1,2 Dimethoxyethane-solvent	110-71-4	2.1
Lithium salt	7791-03-9	2.4
Polypropylene (PP)	9003-07-0	4.2
Stainless steel	12597-68-1	53

Operations on the EZVIZ App

i The app interface may be different due to version update, and the interface of the app you installed on your phone shall prevail.

1. Homepage

Launch the EZVIZ app, open the homepage of the related gateway, you can manage your water sensor as needed on the page.

Log	Detection log of the sensor.
-----	------------------------------

2. Settings

Parameter	Description
Device Name	Customize the name of your device.
Emergency Button	When enabled, the device will switch to emergency call mode and the original arm and disarm button will be disabled.
Related Devices	You can see the gateway connected to your sensor.
Device Information	You can see the device information here.
Share	Share your device.
Delete Device	Tap to delete the sensor from EZVIZ cloud.

INFORMATION FOR PRIVATE HOUSEHOLDS

1. Separate collection of waste equipment: Electrical and electronic equipment that has become waste is referred to as waste equipment. Owners of waste equipment must dispose of it separately from unsorted municipal waste. In particular, waste equipment does not belong in household waste, but in special collection and return systems.
2. Batteries and rechargeable batteries as well as lamps: Owners of waste equipment shall, as a rule, separate waste batteries and rechargeable batteries that are not enclosed in the waste equipment, which can be removed from the waste equipment without being destroyed, from the waste equipment before handing them in at a collection point. This does not apply if waste equipment is prepared for reuse with the participation of a public waste management authority.
3. Options for returning waste equipment: Owners of waste equipment from private households can return it free of charge to the collection points of the public waste management authorities or to the take-back points set up by manufacturers or distributors within the meaning of the Electrical and Electronics Equipment Law. Stores with a sales area of at least 400 m² for electrical and electronic equipment and those grocery stores with a total sales area of at least 800 m² that offer electrical and electronic equipment several times a year or on a permanent basis and make it available in the market are required to take it back. This also applies in the case of distribution using means of distance communication, if the storage and shipping areas for electrical and electronic equipment are at least 400 m² or the total storage and shipping areas are at least 800 m². Distributors shall, in principle, ensure take-back by providing suitable return facilities at a reasonable distance from the respective end user. The possibility of returning waste equipment free of charge exists for distributors who are obliged to take it back, among other things, if a new similar device that essentially fulfills the same functions is delivered to an end user.
4. Privacy Notice: Waste equipment often contains sensitive personal data. This applies in particular to devices of information and telecommunications technology such as computers and smartphones. In your own interest, please note that each end user is responsible for deleting the data on the waste equipment to be disposed of.
5. Meaning of the symbol "crossed-out wheellie bin": The symbol of a crossed-out wheellie bin regularly depicted on electrical and electronic equipment indicates that the respective device is to be collected separately from unsorted municipal waste at the end of its service life.